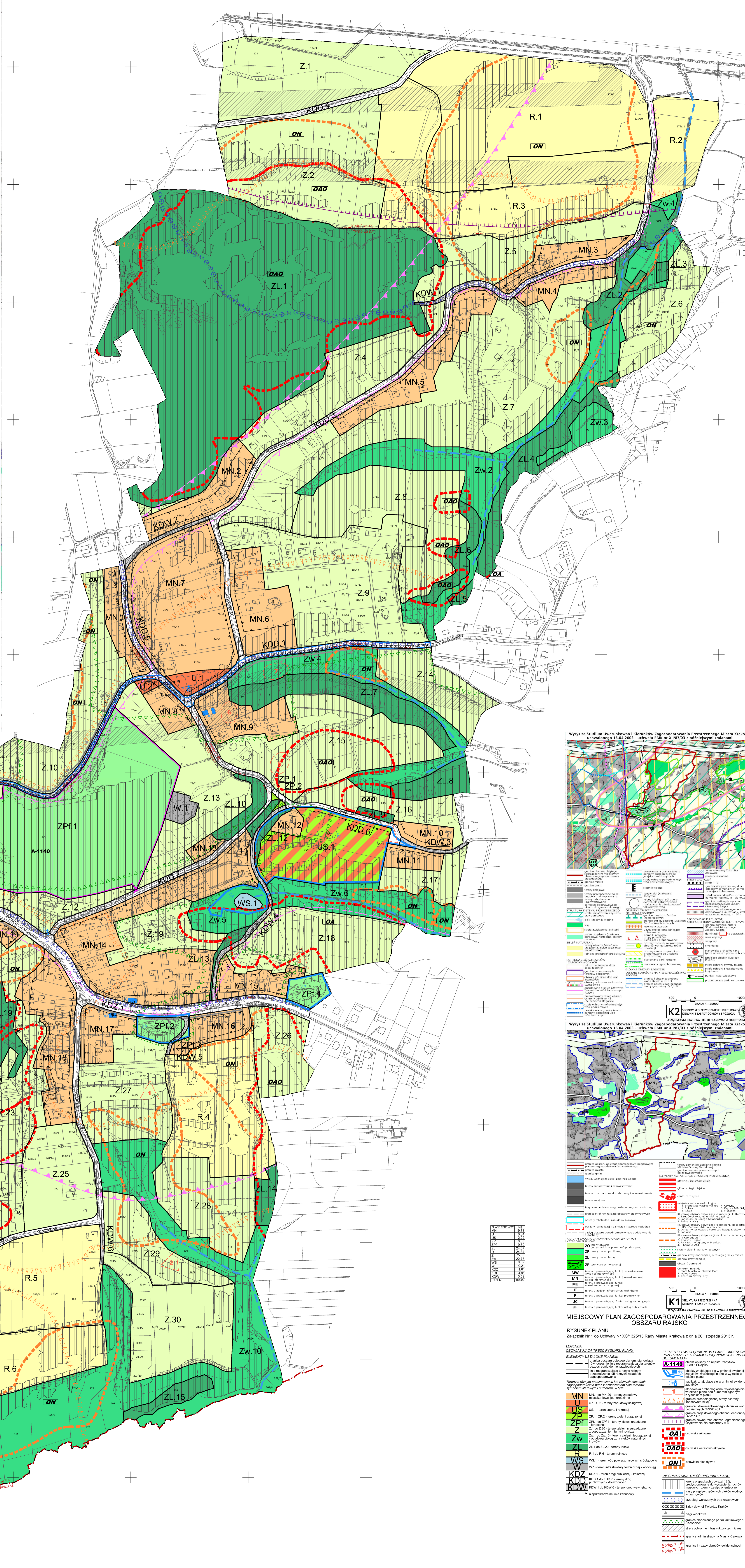


# MIEJSCOWY PLAN ZAGOSPODAROWANIA PRZESTRZENNEGO OBSZARU RAJSKO

RYСУNEK PLANU  
Załącznik Nr 1 do Uchwały Nr XC/1325/13 Rady Miasta Krakowa z dnia 20 listopada 2013 r.

This vertical strip on the left side of the page contains several reference maps and legends. At the top, it shows a small-scale map of the entire city of Krakow with the 'Rajsko' area highlighted. Below this, there are three larger-scale maps, each accompanied by a legend for a specific study (Studium Uwarunkowań i Kierunków Zagospodarowania Przestrzennego).  
1. **Map 1:** 'Wzrusz ze Studium Uwarunkowań i Kierunków Zagospodarowania Przestrzennego Miasta Krakowa uchwalonego 16.04.2003 - uchwała RMK nr XII/87/03 z późniejszymi zmianami'. It shows various land use zones and their boundaries.  
2. **Map 2:** 'Wzrusz ze Studium Uwarunkowań i Kierunków Zagospodarowania Przestrzennego Miasta Krakowa uchwalonego 16.04.2003 - uchwała RMK nr XII/87/03 z późniejszymi zmianami'. This map focuses on infrastructure and technical planning.  
3. **Map 3:** 'Wzrusz ze Studium Uwarunkowań i Kierunków Zagospodarowania Przestrzennego Miasta Krakowa uchwalonego 16.04.2003 - uchwała RMK nr XII/87/03 z późniejszymi zmianami'. This map focuses on the transport system.  
Each map is followed by a legend with symbols and text explaining the different zones and infrastructure elements shown.



This reference map, titled 'K2 INFRASTRUKTURA TECHNICZNA (SIEMKI, SIEMKI POWIĄZANIE)', shows the technical infrastructure for the area. It includes symbols for:  

- Water supply and sewerage networks.
- Gas and heating networks.
- Technical infrastructure for various buildings.

A legend below the map explains the symbols used.

This reference map, titled 'K1 URBANISTYKA PRZESTRZENNA (TERENY I ZAKRES ROZWIĄZAŃ)', shows the spatial urban planning. It includes symbols for:  

- Urban planning zones and boundaries.
- Public utility zones.
- Water supply and sewerage zones.

A legend below the map explains the symbols used.

This reference map, titled 'K3 SYSTEMY TRANSPORTOWE (SIEMKI, SIEMKI POWIĄZANIE)', shows the transport system for the area. It includes symbols for:  

- Public transport routes and stops.
- Individual transport routes.
- Other transport-related infrastructure.

A legend below the map explains the symbols used.

This reference map, titled 'K4 INFRASTRUKTURA TECHNICZNA (SIEMKI, SIEMKI POWIĄZANIE)', shows the technical infrastructure for the area. It includes symbols for:  

- Water supply and sewerage networks.
- Gas and heating networks.
- Technical infrastructure for various buildings.

A legend below the map explains the symbols used.

This section contains the legend and supplementary information for the zoning plan. It includes:  

- A legend for the zoning plan itself, explaining the symbols for various zones (MN, Z, R, U, US, ZP, ZL, ZR, ZW, WS, W, KDD, KDW, ON, OA).
- A legend for the reference maps (K1-K4).
- Supplementary information regarding the plan's validity and other relevant details.